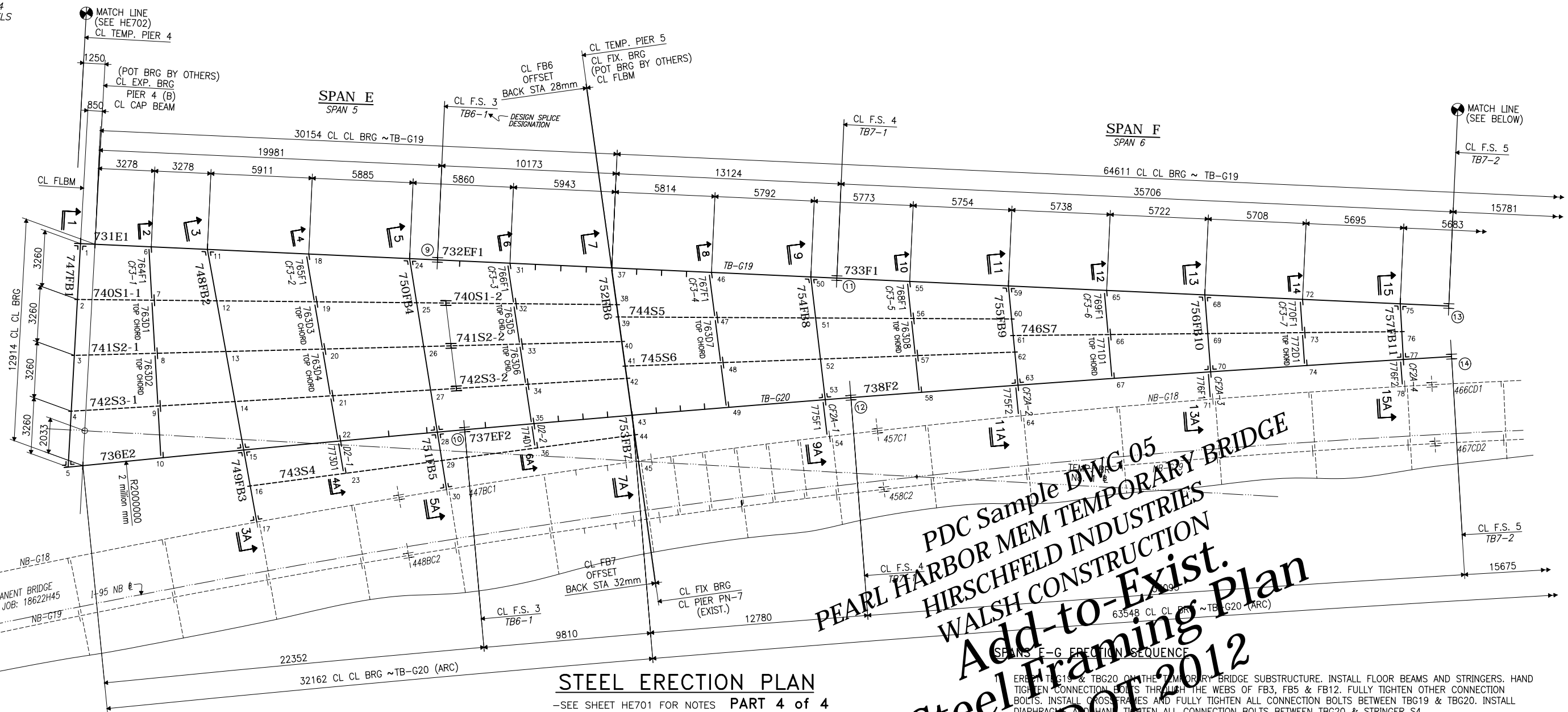


QUICK REF FOR SECTIONS 1-24 AND MISC. BRG ERECTION DETAILS

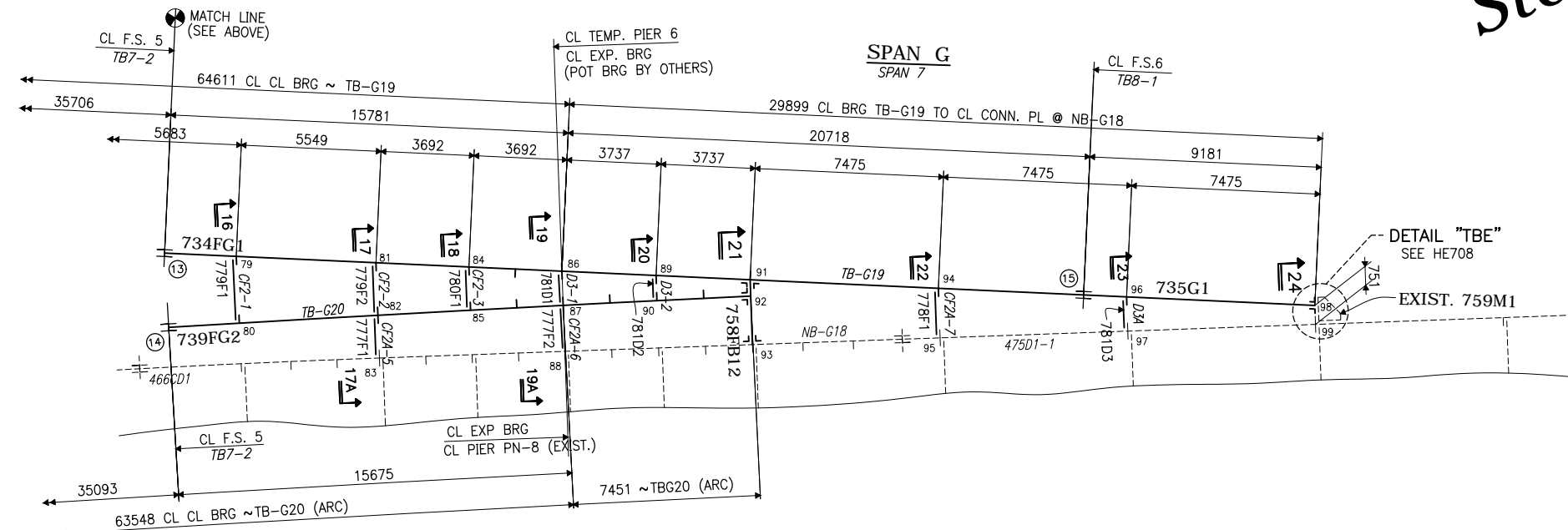
MEMBER	SECT. No.	SHOWN ON
FB1	1	HE705
FB2	3	
FB3	3A	
FB4	5	HE706
FB5	5A	
FB6	7	
FB7	7A	
FB8	9	HE707
FB9	11	
FB10	13	
FB11	15	
FB12	21	HE708
TBG19 END	24	
CF3-1	2	HE709
CF3-2	4	
CF3-3	6	
CF3-4	8	HE710
CF3-5	10	
CF3-6	12	
CF3-7	14	
CF2A-1	9A	HE711
CF2A-2	11A	
CF2A-3	13A	
CF2A-4	15A	
CF2A-5	17A	
CF2A-6	19A	
CF2A-7	22	
CF2-1	16	HE712
CF2-2	17	
CF2-3	18	
D2-1	4A	
D2-2	6A	
D3-1	19	
D3-2	20	
D3A	23	
MISC. BRG DETAILS	--	HE713



**STEEL ERECTION PLAN**  
-SEE SHEET HE701 FOR NOTES PART 4 of 4

ERECT TBG19 & TBG20 ON THE TEMPORARY BRIDGE SUBSTRUCTURE. INSTALL FLOOR BEAMS AND STRINGERS. HAND TIGHTEN CONNECTION BOLTS THROUGH THE WEBS OF FB3, FB5 & FB12. FULLY TIGHTEN OTHER CONNECTION BOLTS. INSTALL CROSSFRAMES AND FULLY TIGHTEN ALL CONNECTION BOLTS BETWEEN TBG19 & TBG20. INSTALL DIAPHRAGMS AND HAND TIGHTEN ALL CONNECTION BOLTS BETWEEN TBG20 & STRINGER S4.

- JACK AND LEVEL TBG19 VERTICALLY 15mm TO ACCOUNT FOR THE ADDITIONAL DEAD LOAD AND SUPERIMPOSED DEAD LOAD MEMBERS. FIELD DRILL HOLES THROUGH TBG19 WEB. CONNECT AND FULLY TIGHTEN ALL BOLTS IN CONN.
- PERFORM DECK POURS 8, 9 & 10 AS INDICATED ON DESIGN SHEETS "DECK POURING SEQUENCE".
- ATTACH CROSSFRAMES AND FULLY TIGHTEN ALL CONNECTION BOLTS BETWEEN TEMPORARY BRIDGE AND NBG18. FULLY TIGHTEN CONNECTION BOLTS THROUGH THE WEBS OF FB3, FB5 & FB12 AND ALL CONNECTION BOLTS OF DIAPHRAGMS BETWEEN TBG20 & STRINGER S4.
- PERFORM DECK POURS 11 & 12 AS INDICATED ON DESIGN SHEETS "DECK POURING SEQUENCE".



FABRICATED BY		ABINGDON
HOLES		SHOP FASTENERS
SHOP PAINT		
SHOP INSPECTION		
GENERAL NOTES		

REVISIONS		
DATE	NO.	BY
05/01/12	A2	PDC/SB
	R1	

ORDER NO.	09-18622H52
DETAILS OF	STEEL ERECTION PLAN
	PART 4 OF 4
PROJECT	BRIDGE STRUCTURE No. TEMP. BR No. 1
STA:	600+165.704 TO STA: 1-95 NB 6+140.375
LOCATION	NEW HAVEN, CONNECTICUT
CUSTOMER	WALSH CONSTRUCTION
<b>HIRSCHFELD INDUSTRIES BRIDGE</b>	
GREENSBORO, NC (336) 275-9711	
MADE BY	WS
CHECKED BY	PDC/SB
SOUND LEADER	Precise Drafting
DATE	04-2012