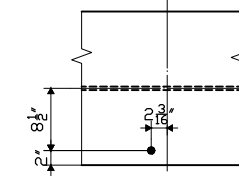


115'-0" OVERALL LENGTH @ TOP & BOT OF WEB

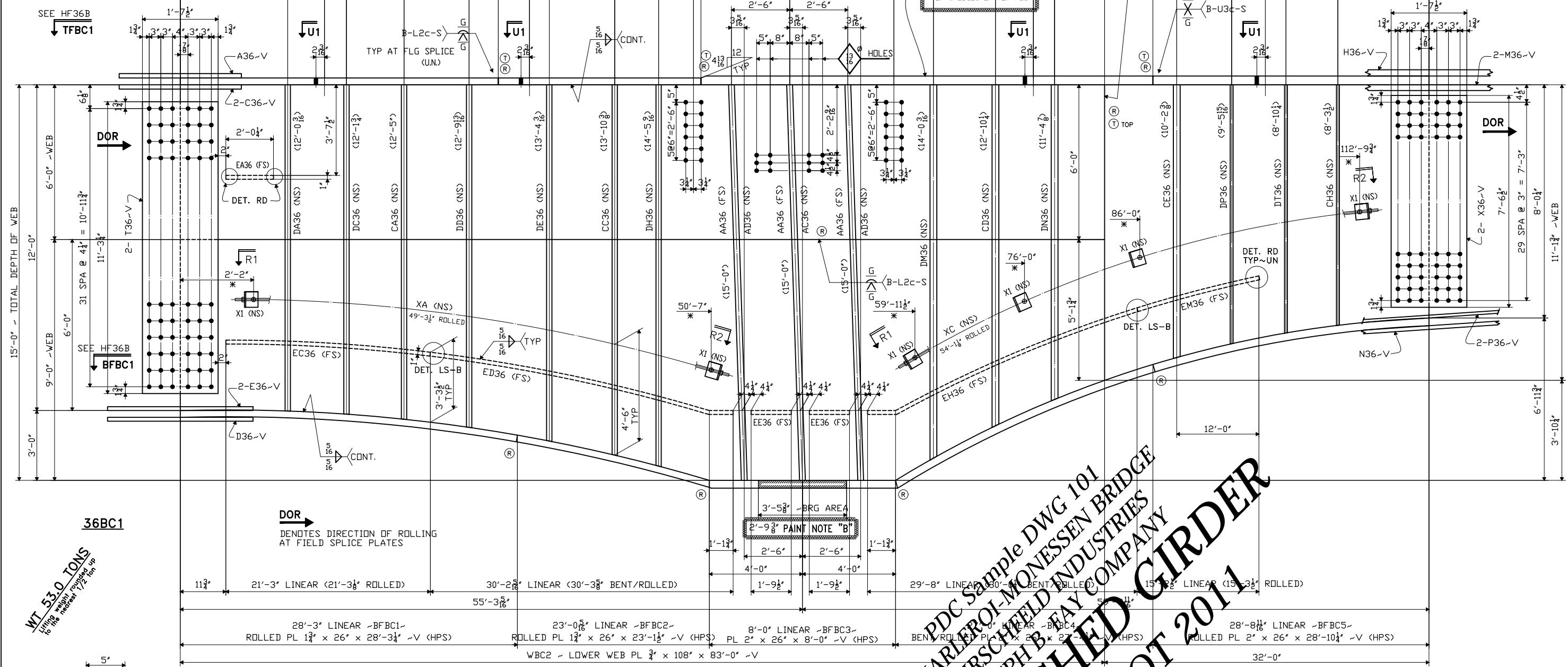
EXTENSION DIM. GIVEN TO THIS LINE



SECTION U1

PAINT NOTE "C" APPLIES TO ALL OPEN HOLES AT PL GIRDER

PAINT NOTE "A" TOP & EDGES OF TOP FLG



15'-0" - TOTAL DEPTH OF WEB
12'-0" - WEB
9'-0" - WEB
3'-0" - WEB

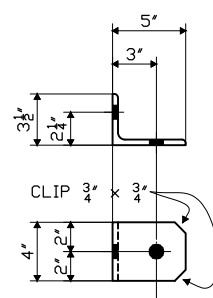
DOR
29 SPA @ 3" = 7'-3"
8'-0"
11'-1 1/2" - WEB

36BC1

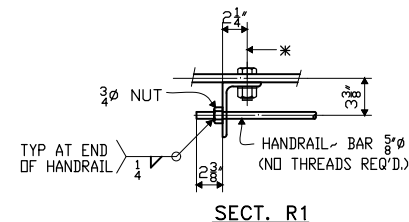
DOR DENOTES DIRECTION OF ROLLING AT FIELD SPLICE PLATES

WT 53.0 TONS
Lifting weight provided for top of the material

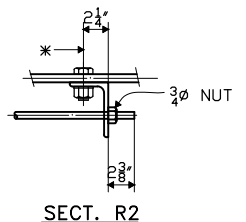
CHARLEROI-MONNESSEN BRIDGE
HIRSCHELD INDUSTRIES
JOSEPH B. FAY COMPANY
HAUNCHED GIRDER
PENNDOT 2011



DETAIL of "X1"
L 5x3 1/2 x 3/8 x 0'-4"



SECT. R1



SECT. R2

LEGEND
* INDICATES 3/8x2 1/2 HSBT -BOLT HEAD (FS)

FABRICATED BY ABINGDON
HOLES 1/8" (U.N.) SHOP FASTENERS
SHOP PAINT PAINTED PER HNI & AS NOTED
SHOP INSPECTION
GENERAL NOTES WORK THIS SHEET w/HF36B/C/D

Table with columns: DATE, NO., BY. Row 1: R1

ORDER NO. 11-18684H22
DETAILS OF PL GIRDER - SPAN BC
LINE 1
PROJECT CHARLEROI-MONNESSEN BRIDGE
STA: 309+33.26 OVER THE MONONGAHELA RIVER
LOCATION WASHINGTON & WESTMORELAND CO, PA
CUSTOMER JOSEPH B. FAY COMPANY
HIRSCHELD INDUSTRIES BRIDGE
MADE BY GM
CHECKED BY PDC/SB
SOUND LEADER Precise Drafting Co., Inc.
DATE 03-2011
SHEET HF36A

STRUCTURE No. S-30378
S.R. 2018 SECTION A10
SEG. 0010 OFFSET 0089
STA: 305+12.45 TO STA: 315+23.55