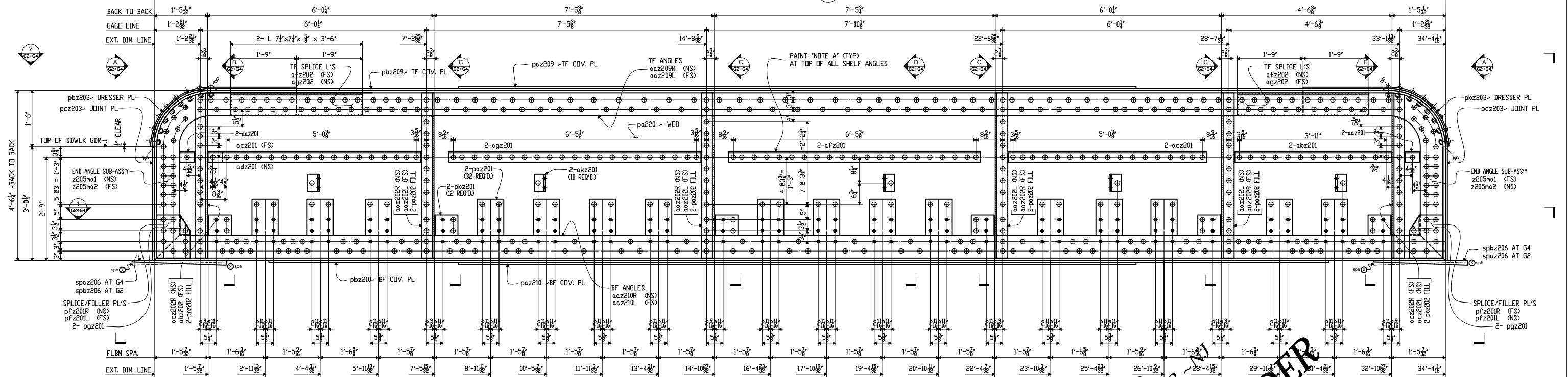


34'-4 1/8" BACK TO BACK OF VERTICAL END ANGLE SUB-ASSEMBLIES

TOP FLANGE COVER PL 3/8" x 18" x 18'-0 1/4"  
TOP FLANGE COVER PL 3/8" x 18" x 31'-0 3/4"  
TOP FLG - 2 L 8x8x3/4 x 26'-9 1/4"

WEB PL 3/4" x 54" x 34'-3 3/8" (1/2" CAMBER AT MIDPOINT)

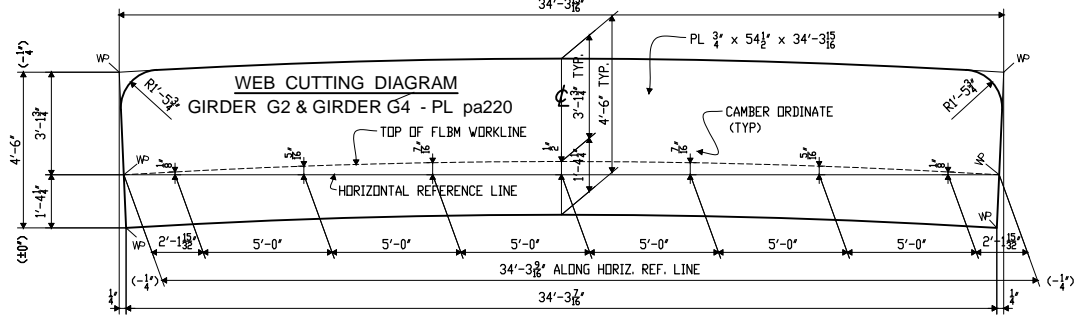
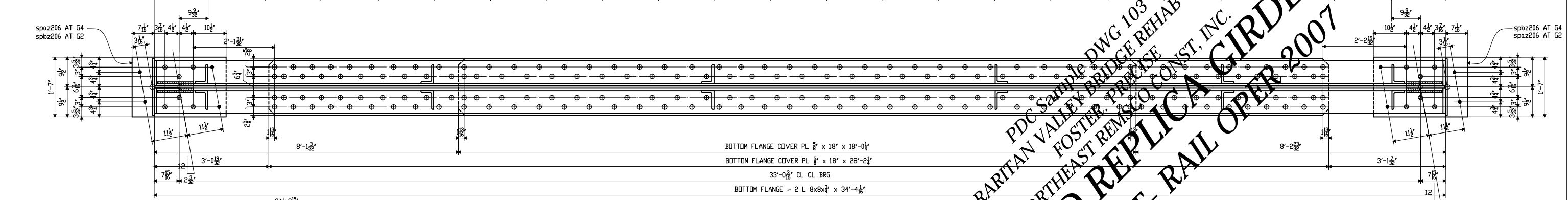
SECTION 2  
G2+G4



BOTTOM FLANGE COVER PL 3/8" x 18" x 18'-0 1/4"  
BOTTOM FLANGE COVER PL 3/8" x 18" x 28'-2 1/4"  
33'-0 3/8" CL CL BRG  
BOTTOM FLANGE - 2 L 8x8x3/4 x 34'-4 1/8"

SECTION 1  
G2+G4

MAIN GIRDER ~ 220G4 (AS SHOWN)  
MAIN GIRDER ~ 220G2 (G2 SAME AS G4 EXCEPT FOR SOLE PL ORIENTATION)



PDC Sample DWG 103  
RARITAN VALLEY BRIDGE REHAB - NJ  
FOSTER-PRECISE  
NORTHEAST REMSCO CONST., INC.  
NJ TRANSIT - RAIL OPER 2007  
BOLTED REPLICAS GIRDER

CHORD DETAILS, SEE SHEET "Z209"  
CHORD DETAILS, SEE SHEET "Z210"

Table with 2 columns: REV. NO. DATE and REVISION

SHOP NOTES  
HOLES 1/8" (U.N.)  
BOLTS T.C.H.S. BDLT 7/8" (U.N.)  
PAINT PER GNI  
WELDS TO BE MADE USING NONE ELECTRODES  
MATERIAL A709 GRADE 36  
WORK THIS SHEET WITH SHEET 220B

Table with 2 columns: MAIN GIRDER - G2+G4 and FOSTER-PRECISE