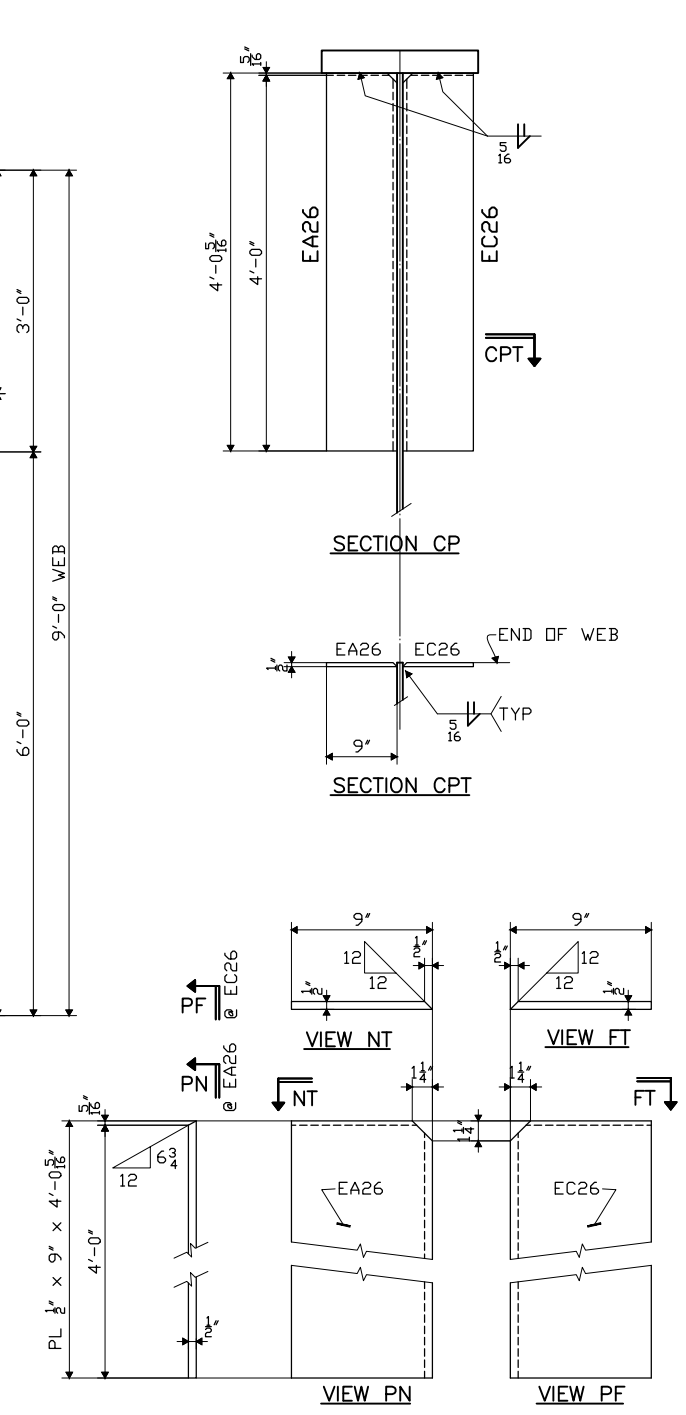
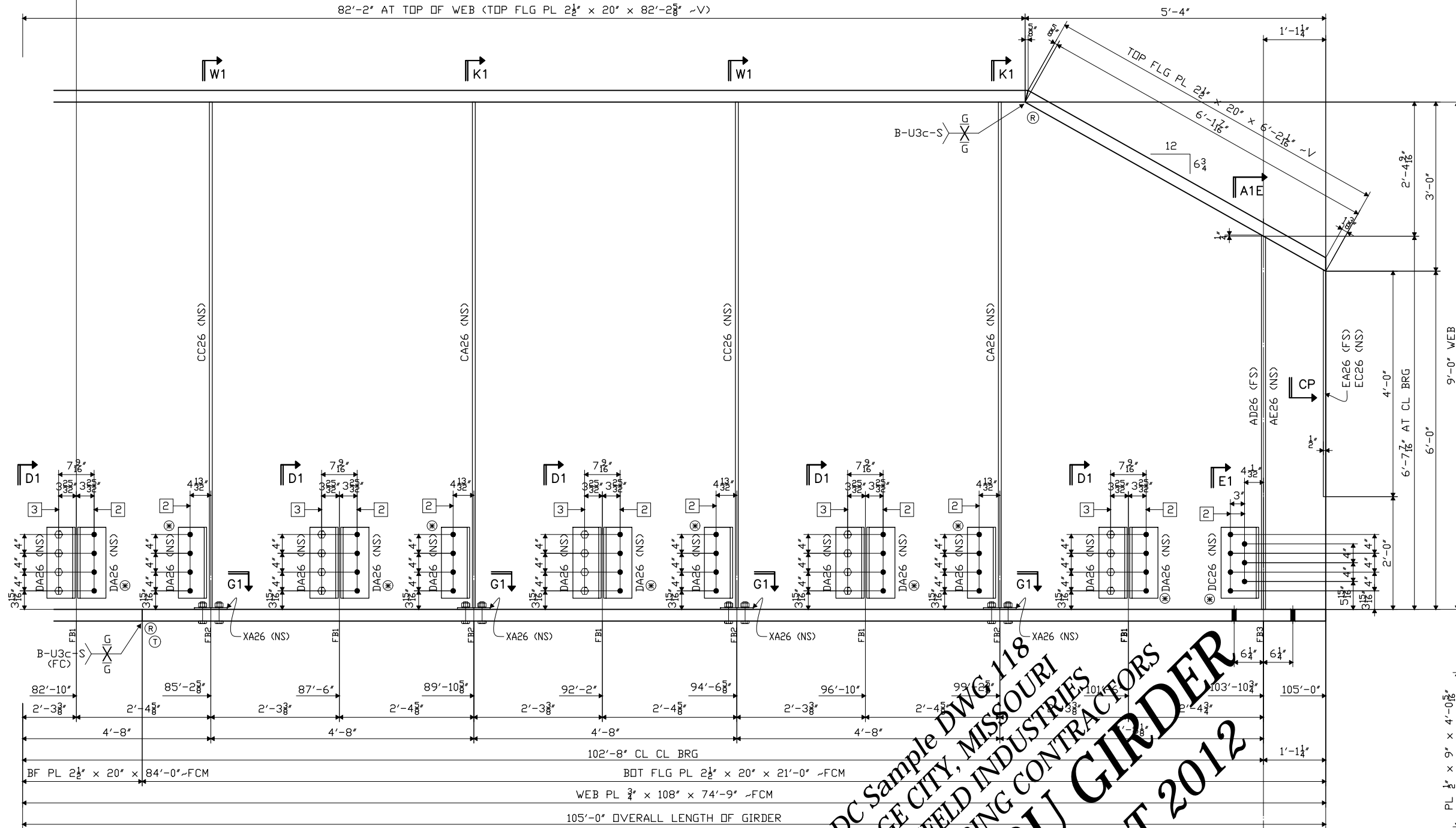
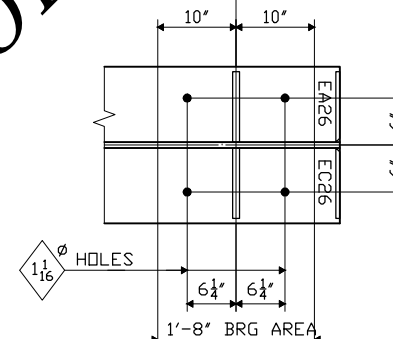


MATCH LINE
SEE HF26C

82'-2" AT TOP OF WEB (TOP FLG PL 2 1/2" x 20" x 82'-2 3/8" -V)



DET. of CLOSURE PL "EA26"
DET. of CLOSURE PL "EC26"



FABRICATED BY COLFAX
HOLES - 1/16" (UN) SHOP FASTENERS _____
SHOP PAINT NONE
SHOP INSPECTION _____
GENERAL NOTES WORK THIS SHT. w/ GROUP HF26A/B/C/D/E

REVISIONS		
DATE	NO.	BY
	R1	

UNION PACIFIC RAILROAD PROJECT No. 48151
C E NUMBER 118498

ORDER NO. 12-18758H22
DETAILS OF PL GIRDER - SPAN D
LINE 1

PROJECT BR #116.89 JEFFERSON CITY SUB.
UPRR OVER OSAGE RIVER

LOCATION OSAGE CITY, MISSOURI
CUSTOMER OCCI ENGINEERING CONTRACTORS

HIRSCHFELD INDUSTRIES
BRIDGE
GREENSBORO, NC (336) 275-9711

MADE BY GM
CHECKED BY PDC/SB
SOUND LEADER Precise Drafting Co., Inc.
DATE 03-12

SHEET HF26D

26D1

PDC Sample DWG 118
OSAGE CITY, MISSOURI
HIRSCHFELD INDUSTRIES
OCCI ENGINEERING CONTRACTORS
UPRR THRU GIRDER
MISSOURI DOT 2012