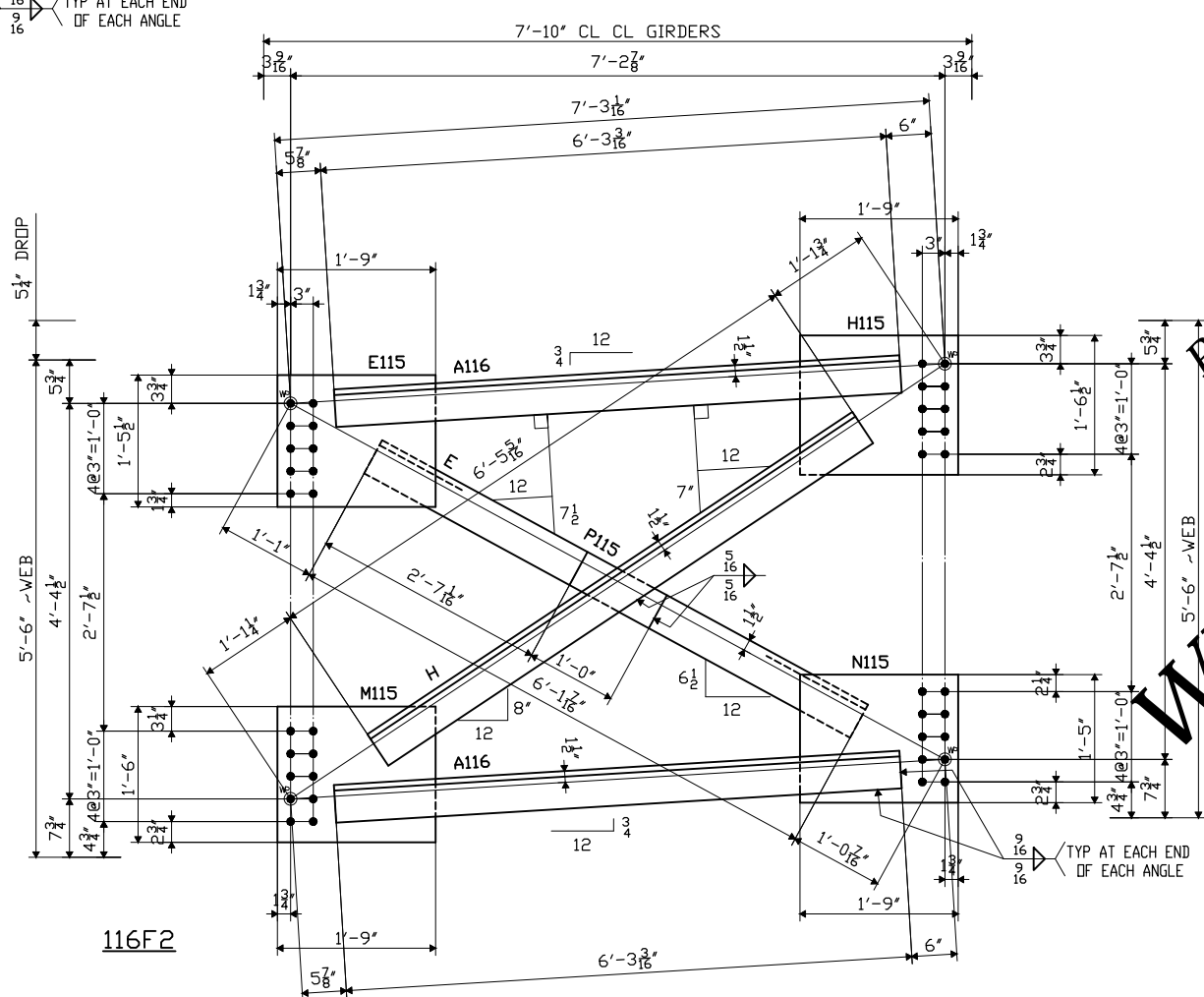
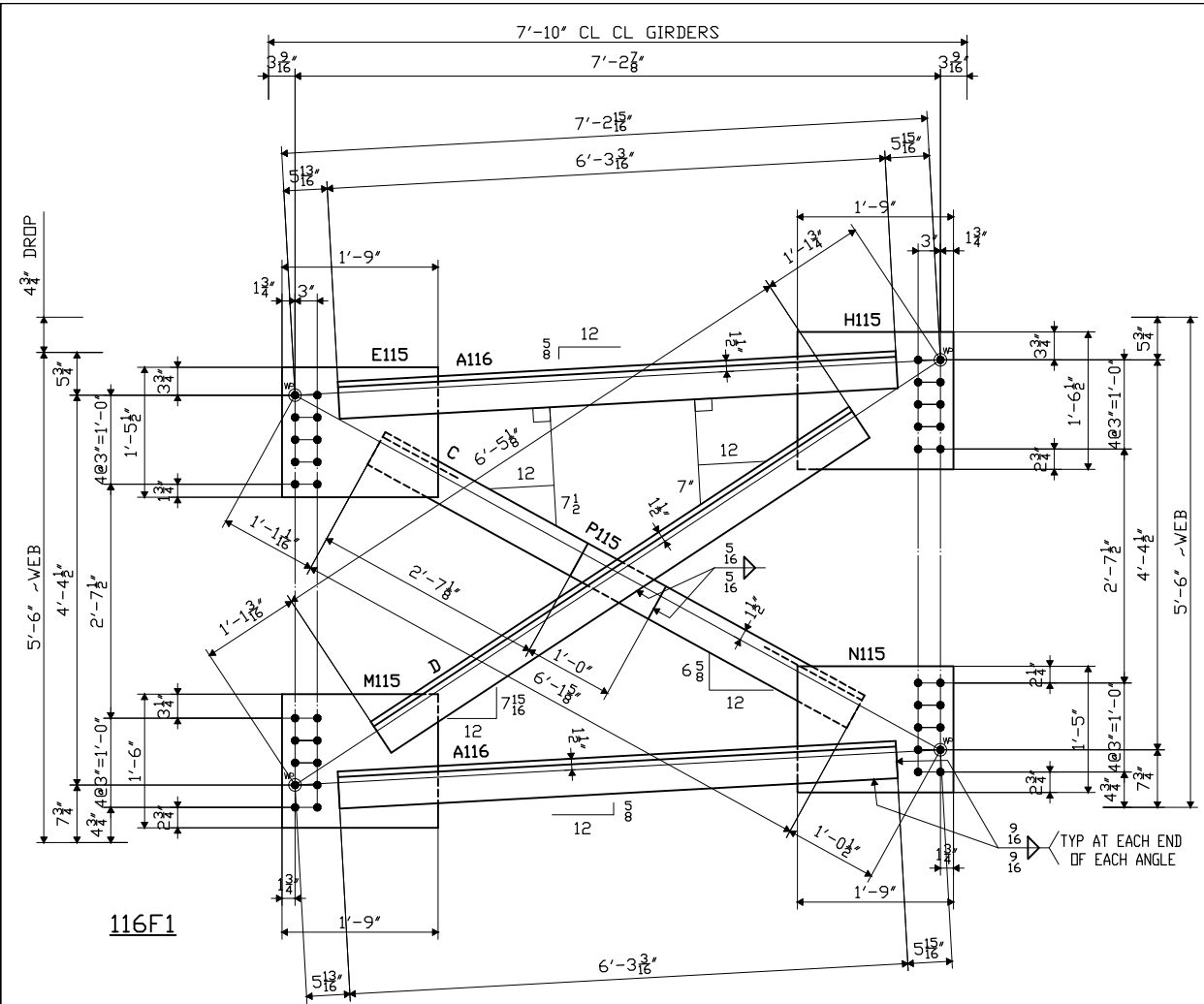


STRUCTURE No. 67.47D
 FED. ROAD DIV. NO. STATE NJ FED. AID PROJ. NO.

SHOP BILL

ITEM NO.	SHIPPING LIST		PCS RECD	DESCRIPTION	LENGTH	ASSEMBLY MARK	REMARKS	MTRL. SPEC.	APPLICATION
	NO.	MARK							
1									
2	6	116F1		INTERMEDIATE DIAPHRAGM					
3			12	L 5x5x $\frac{5}{8}$	6 3 $\frac{3}{16}$	A116	V	M270-50W	8407BY 8
4			6	L 5x5x $\frac{5}{8}$	6 1 $\frac{5}{8}$	C	V	M270-50W	8407BY 4
5			6	L 5x5x $\frac{5}{8}$	6 5 $\frac{1}{8}$	D	V	M270-50W	8407BY 4
6			6	PL $\frac{5}{8}$ x 17 $\frac{1}{2}$	1 9	E115	V	M270-50W	SHN
7			6	PL $\frac{5}{8}$ x 18 $\frac{1}{2}$	1 9	H115	V	M270-50W	SHN
8			6	PL $\frac{5}{8}$ x 18	1 9	M115	V	M270-50W	SHN
9			6	PL $\frac{5}{8}$ x 17	1 9	N115	V	M270-50W	SHN
10			6	PL $\frac{5}{8}$ x 5	1 0	P115	V	M270-50W	SHN
11									
12									
13	42	116F2		INTERMEDIATE DIAPHRAGM					
14			84	L 5x5x $\frac{5}{8}$	6 3 $\frac{3}{16}$	A116	V	M270-50W	8407BY 8
15			42	L 5x5x $\frac{5}{8}$	6 1 $\frac{7}{16}$	E	V	M270-50W	8407BY 4
16			42	L 5x5x $\frac{5}{8}$	6 5 $\frac{5}{16}$	H	V	M270-50W	8407BY 4
17			42	PL $\frac{5}{8}$ x 17 $\frac{1}{2}$	1 9	E115	V	M270-50W	SHN
18			42	PL $\frac{5}{8}$ x 18 $\frac{1}{2}$	1 9	H115	V	M270-50W	SHN
19			42	PL $\frac{5}{8}$ x 18	1 9	M115	V	M270-50W	SHN
20			42	PL $\frac{5}{8}$ x 17	1 9	N115	V	M270-50W	SHN
21			42	PL $\frac{5}{8}$ x 5	1 0	P115	V	M270-50W	SHN
22									
23									
24									
25	DOMESTIC MATERIAL								

SEE HN101 FOR FABRICATION NOTES



CONTRACTOR APPROVAL STAMP
 APPROVED
 DATE _____
 PKF-MARK III, INC.
 BY: _____

CONSULTANT APPROVAL STAMP

PDC Sample DWG 209
 MERCER COUNTY, NJ
 HIRSCHFELD INDUSTRIES
 ARCHER STEEL ERECTING CO.
WELDED CROSSFRAME
 NJTA 2010

FABRICATED BY COLFAX
 HOLES 12
 SHOP PAINT NONE
 SHOP INSPECTION
 GENERAL NOTES

REVISIONS		
DATE	NO.	BY
	R1	

NEW JERSEY TURNPIKE AUTHORITY
 INTERCHANGE 6 TO 9 WIDENING PROGRAM
 SECTION 6
 ORDER NO. 10-18689H22
 DETAILS OF INTERMEDIATE DIAPHRAGMS
 PROJECT CONTRACT No. T869.120.605
 STRUCTURE No. 67.47D
 LOCATION MERCER COUNTY, NJ
 CUSTOMER ARCHER STEEL ERECTING CO.
HIRSCHFELD INDUSTRIES
 BRIDGE
 GREENSBORO, NC (336) 275-9711
 MADE BY WS
 CHECKED BY PDC/SB
 SQUAD LEADER Precise Drafting Co, Inc.
 DATE 11-2010
 SHEET HF116