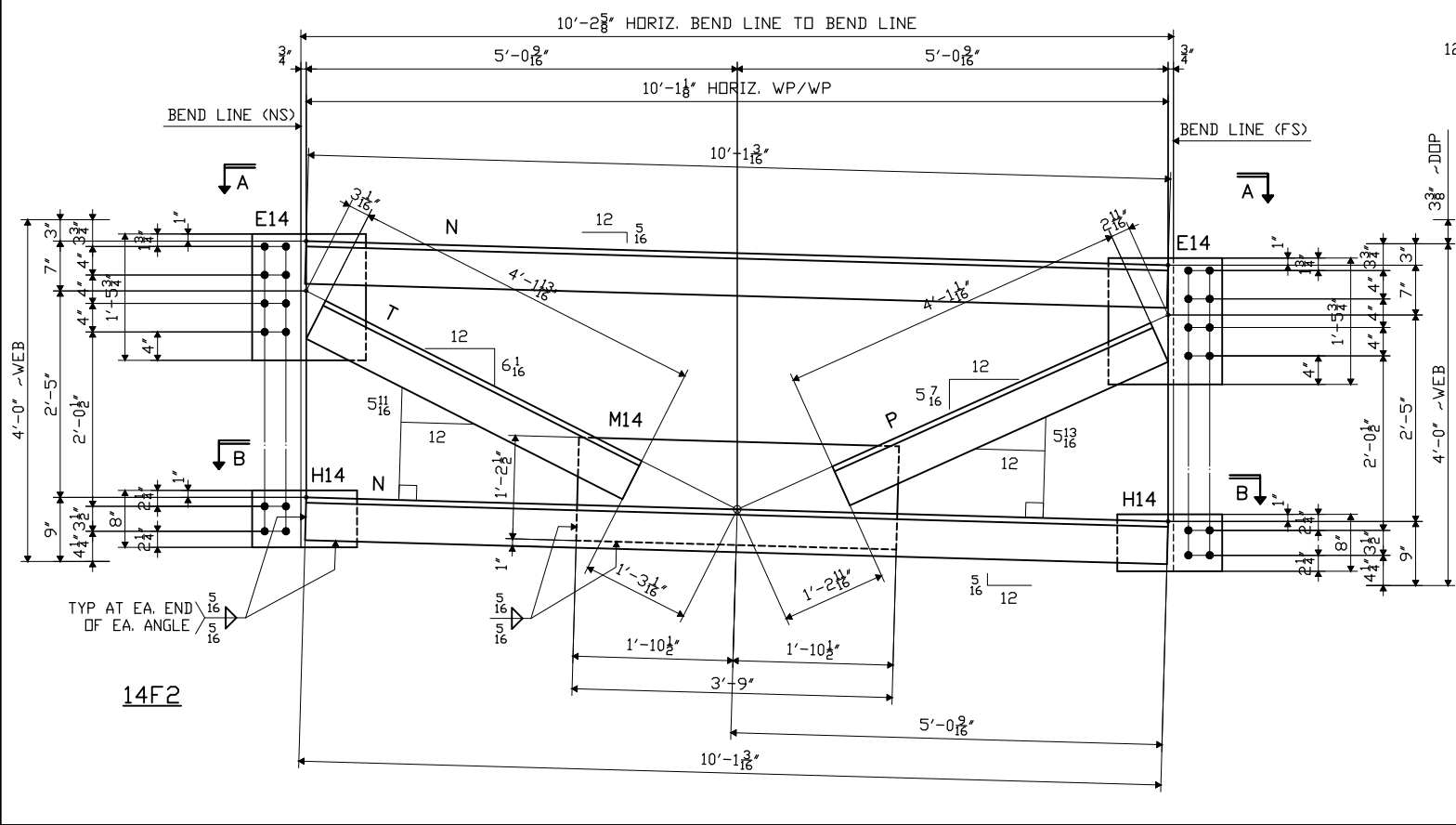
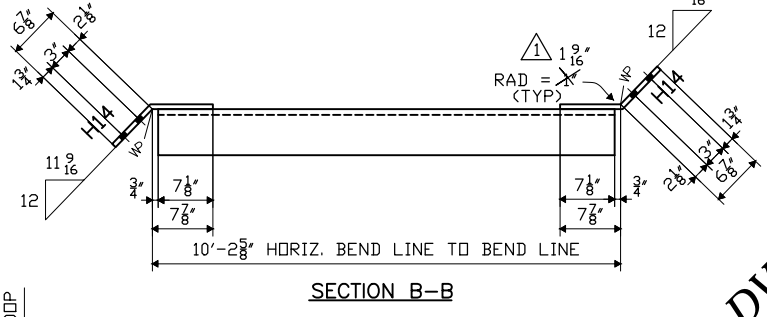
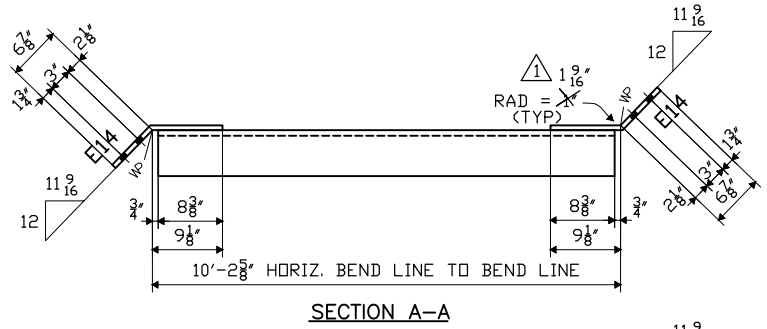


PAINT NOTE "C" APPLIES TO ALL OPEN HOLES AT CROSSFRAMES.



SHOP BILL

LINE NO.	SHIPPING LIST		PCS RECD	DESCRIPTION	LENGTH		ASSEMBLY MARK	REMARKS	MTRL. SPEC.	MATERIAL APPLICATION	
	NO.	MARK			FEET	INCHES				P.O. NO.	LINE NO.
1											
2											
3	1	14F1		PIER CROSSFRAME							
4			2	L 6 x 6 x 3/4	10	1 1/2	A	V	M270-50	SHN	
5			1	L 6 x 6 x 3/4	4	0 1/2	C	V	M270-50	6929BY	1
6			1	L 6 x 6 x 3/4	4	2 1/8	D	V	M270-50	6929BY	1
7			2	PL 5/8 x 17 3/4	1	4	E14	V-BEND	M270-50	SHN	
8			2	PL 5/8 x 8	1	2 3/4	H14	V-BEND	M270-50	SHN	
9			1	PL 5/8 x 14 1/2	3	9	M14	V	M270-50	SHN	
10											
11											
12	1	14F2		PIER CROSSFRAME							
13			2	L 6 x 6 x 3/4	10	1 3/8	N	V	M270-50	6929BY	1
14			1	L 6 x 6 x 3/4	4	1 1/8	P	V	M270-50	6929BY	1
15			1	L 6 x 6 x 3/4	4	1 1/8	T	V	M270-50	6929BY	1
16			2	PL 5/8 x 17 3/4	1	4	E14	V-BEND	M270-50	SHN	
17			2	PL 5/8 x 8	1	2 3/4	H14	V-BEND	M270-50	SHN	
18			1	PL 5/8 x 14 1/2	3	9	M14	V	M270-50	SHN	
19											
20											
21											
22											
23											
24											
25											

DOMESTIC MATERIAL
SEE HN1 FOR FABRICATION NOTES

PDC Sample DWG 211
PA TURNPIKE COMMISSION
HIRSCHFELD INDUSTRIES
NEW ENTERPRISE STONE & LIME
WELDED CROSSFRAME
PENNDOT 2012

COLFAX
FURNISHED BY (UN)
SHOP FASTENERS
SHOP PAINT PAINTED PER HNI & AS NOTED
SHOP INSPECTION
GENERAL NOTES

REVISIONS			
DATE	NO.	BY	REVISIONS
8/16/12	R1	PDC/GM	REVISED BENT PLATE RADIUS PER MW.

PA TURNPIKE COMMISSION
WBS No. T-129.00T001-3-03

ORDER NO. 11-18739H22
DETAILS OF PIER DIAPHRAGM

PROJECT REPLACEMENT OF BRIDGE B-488
AT MILEPOST 132.54

LOCATION BEDFORD COUNTY, PA

CUSTOMER NEW ENTERPRISE STONE & LIME

HIRSCHFELD INDUSTRIES
BRIDGE
GREENSBORO, NC (336) 275-9711

MADE BY WS
CHECKED BY PDC/SB
SQUAD LEADER Precise Drafting Co, Inc.
DATE 01-2012

SHEET HF14