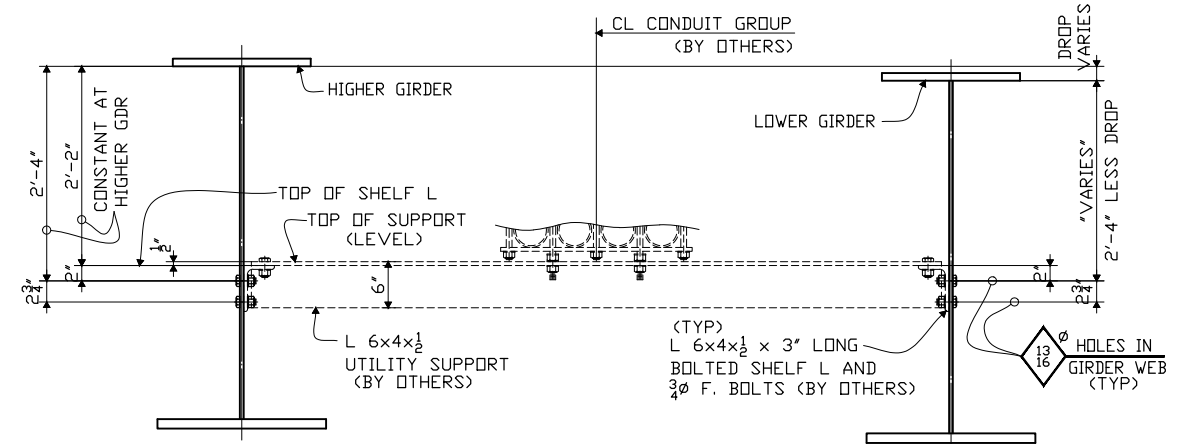


STEEL ERECTION PLAN ~ STRUCTURE "11" (4 SPAN UNIT)~
 - SEE SHEET HE201 FOR NOTES.

*PDC Sample DWG 26
 Reconstruction of the South Street
 CAROLINA STEEL GROUP, LLC
 Framing (Curved Bridge)
 PENNDOT 2009*



TYP. ADDITIONAL UTILITY SUPPORT

FABRICATED BY ABINGDON		
HOLES _____ SHOP FASTENERS _____		
SHOP PAINT _____		
SHOP INSPECTION _____		
GENERAL NOTES _____		
REVISIONS		
DATE	NO.	BY
	R1	

PENN DOT EMCS PROJECT No. 17724
 CITY OF PHILADELPHIA
 RECONSTRUCTION OF THE SOUTH STREET
 BRIDGE FROM 33rd ST TO 27th ST

Field Use	
Approval	

NOTICE TO ERECTOR
 NO CREDIT WILL BE ALLOWED, BACK-CHARGE ACCEPTED OR LIABILITY ASSUMED BY CAROLINA STEEL TO ANYONE FOR WORK PERFORMED IN REPLACING OR CORRECTING MATERIALS OR WORKMANSHIP FOR THE MATERIALS SHOWN ON THIS DRAWING UNLESS THESE DIFFICULTIES HAVE BEEN BROUGHT TO THE ATTENTION OF CAROLINA STEEL GROUP, LLC AND PROPER CORRECTIVE WORK HAS BEEN EXPRESSLY AUTHORIZED BY CAROLINA STEEL GROUP, LLC.

ORDER NO. 08-18567H32
 DETAILS OF ERECTION PLAN

PROJECT BRIDGE STRUCTURE No. 11
 STA: 26+63.86 TO STA: 32+09.49
 LOCATION PHILADELPHIA COUNTY, PA
 CUSTOMER DRISCOLL CONSTRUCTION CO., INC.
CAROLINA STEEL GROUP, LLC.

MADE BY GM
 CHECKED BY PDC/SB
 SQUAD LEADER *Precise Drafting Co., Inc.*
 DATE 02-09 SHEET HE202