

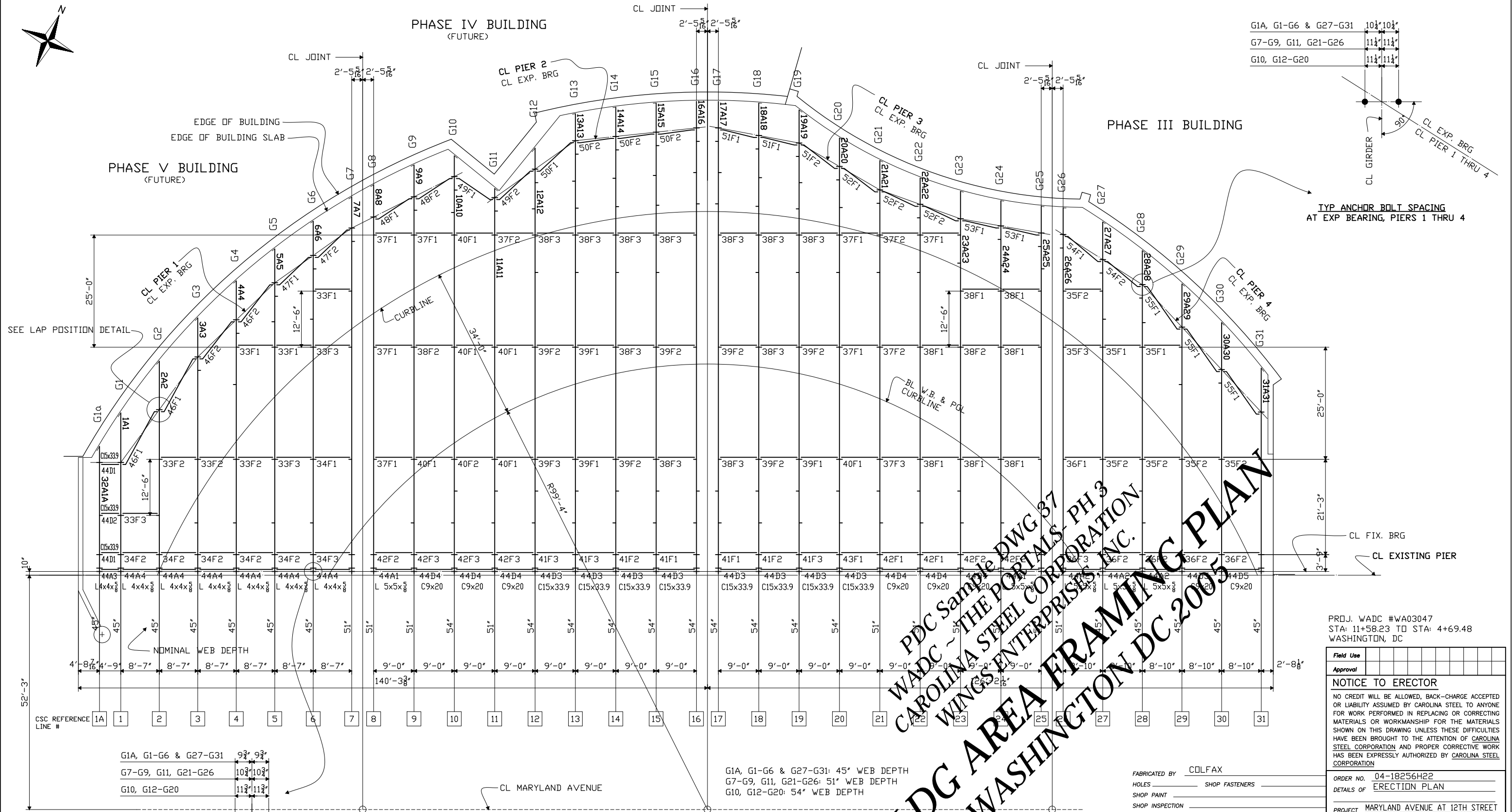


PHASE IV BUILDING
(FUTURE)

PHASE III BUILDING

G1A, G1-G6 & G27-G31	10 1/2" x 10 1/2"
G7-G9, G11, G21-G26	11 1/4" x 11 1/4"
G10, G12-G20	11 1/4" x 11 1/4"

TYP ANCHOR BOLT SPACING
AT EXP BEARING, PIERS 1 THRU 4



SEE LAP POSITION DETAIL

CSC REFERENCE LINE #

G1A, G1-G6 & G27-G31	9 3/4" x 9 3/4"
G7-G9, G11, G21-G26	10 3/4" x 10 3/4"
G10, G12-G20	11 3/4" x 11 3/4"

G1A, G1-G6 & G27-G31: 45" WEB DEPTH
G7-G9, G11, G21-G26: 51" WEB DEPTH
G10, G12-G20: 54" WEB DEPTH

FRAMING PLAN - AREA I

- PLATE GIRDER WEB DEPTH VARIES. SEE PLAN FOR WEB DEPTH AT EACH LINE.
- SEE SHEET HE2 FOR BEARING AND TYP. CROSSFRAME DETAILS
- SEE SHEET HN1 FOR GENERAL NOTES

TYP ANCHOR BOLT SPACING
AT FIXED BEARING, EXISTING PIER

PDC Sample DWG 37
 WADC - THE PORTALS PH 3
 CAROLINA STEEL CORPORATION
 WINGS ENTERPRISES, INC.
 WASHINGTON DC 2005

PROJ. WADC #WA03047
STA: 11+58.23 TO STA: 4+69.48
WASHINGTON, DC

Field Use	Approval

NOTICE TO ERECTOR
NO CREDIT WILL BE ALLOWED, BACK-CHARGE ACCEPTED OR LIABILITY ASSUMED BY CAROLINA STEEL TO ANYONE FOR WORK PERFORMED IN REPLACING OR CORRECTING MATERIALS OR WORKMANSHIP FOR THE MATERIALS SHOWN ON THIS DRAWING UNLESS THESE DIFFICULTIES HAVE BEEN BROUGHT TO THE ATTENTION OF CAROLINA STEEL CORPORATION AND PROPER CORRECTIVE WORK HAS BEEN EXPRESSLY AUTHORIZED BY CAROLINA STEEL CORPORATION

ORDER NO. 04-18256H22
DETAILS OF ERECTION PLAN
PROJECT MARYLAND AVENUE AT 12TH STREET
THE PORTALS - PHASE 3
LOCATION WASHINGTON, DC
CUSTOMER WINGS ENTERPRISES, INC.
CAROLINA STEEL CORPORATION

FABRICATED BY COLFAX
HOLES SHOP FASTENERS
SHOP PAINT
SHOP INSPECTION
GENERAL NOTES

DATE	NO.	BY	REVISIONS
	R1		

MADE BY SB
CHECKED BY PDC
SQUAD LEADER FMW
DATE 01-05
SHEET HE1