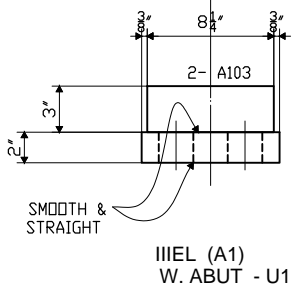
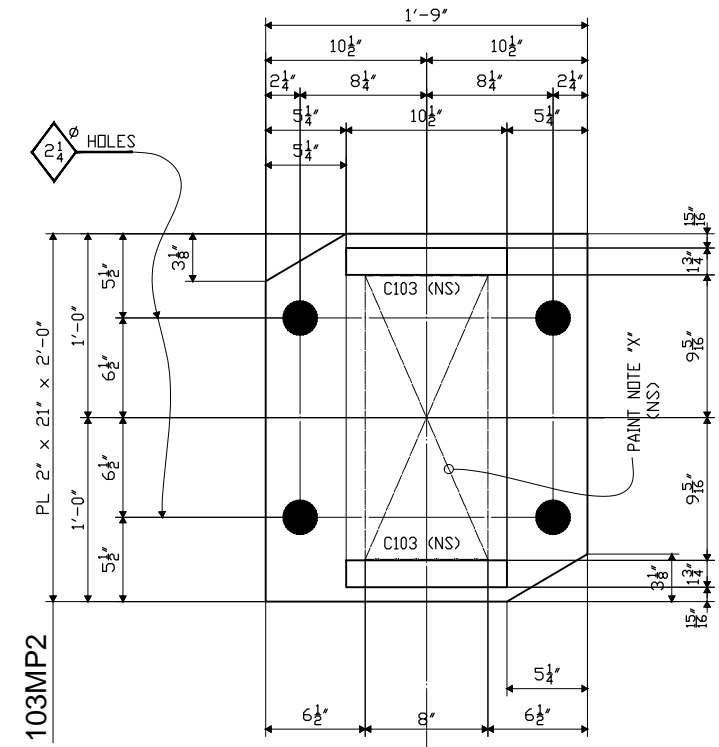


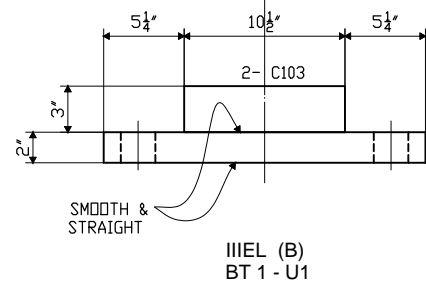
103MP1



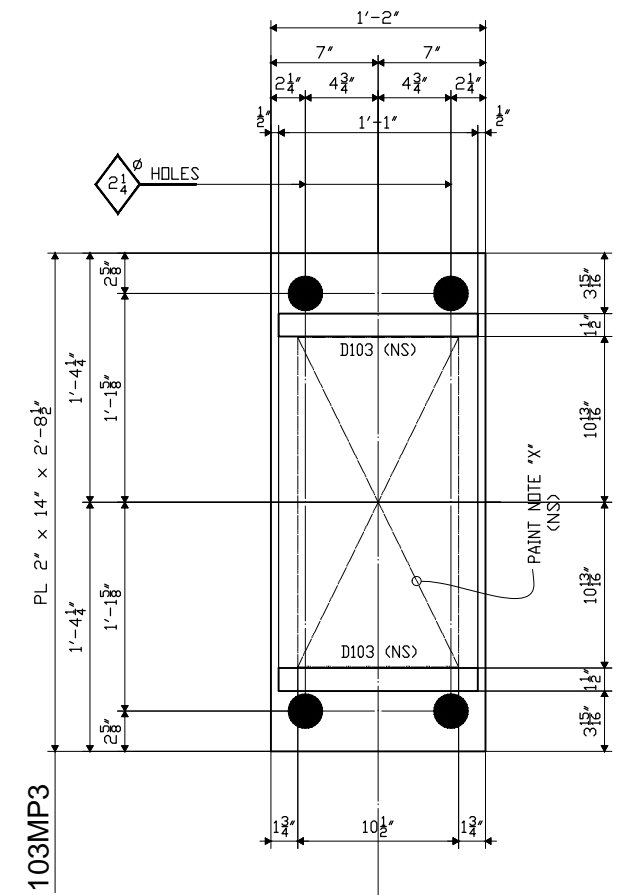
KEEPER BAR WELD DETAIL AT 103MP3 ONLY



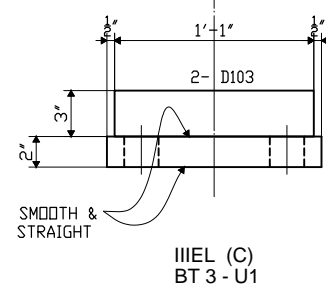
103MP2



KEEPER BAR WELD DETAIL ALL BARS EXCEPT AT 103MP3.



103MP3



PDC Sample DWG 403
 CUMBERLAND CO, PA
 CAROLINA STEEL CORPORATION
 WALSH CONSTRUCTION CO.
BEARING ITEM Detail
PENNDOT 2008

SHOP BILL

LINE NO.	SHIPPING LIST		PCS REQD	DESCRIPTION	LENGTH	ASSEMBLY MARK	REMARKS	MTRL. SPEC.	MATERIAL APPLICATION	
	NO.	MARK							P.O. NO.	LINE NO.
1										
2										
3	4	103MP1	4	PL 2 x 9	2 2			M270-50	3377CI	3
4			8	PL 1 1/4 x 3	0 8 1/4	A103		M270-50	SHN	
5										
6										
7										
8	4	103MP2	4	PL 2 x 21	2 0			M270-50	3377CI	3
9			8	PL 1 3/4 x 3	0 10 1/2	C103		M270-50	SHN	
10										
11										
12	4	103MP3	4	PL 2 x 14	2 8 1/2			M270-50	3377CI	3
13			8	PL 1 1/2 x 3	1 1	D103		M270-50	SHN	
14										
15										
16										
17										
18										
19										
20										
21										
22										
23										
24										
25	DOMESTIC MATERIAL									

SEE HN1 FOR FABRICATION NOTES

PENNDOT 2008
 ORDER NO. 08-18479H21
 DETAILS OF MASONRY PLATES
 PROJECT S.R. 0581 WIDENING OVER S.R. 2014,
 S.R. 2033 AND NORFOLK SOUTHERN R.R.
 LOCATION CUMBERLAND COUNTY, PA
 CUSTOMER WALSH CONSTRUCTION CO.
CAROLINA STEEL CORPORATION
 MADE BY GM
 CHECKED BY PDC/SB
 SOUND LEADER Precise Drafting Co, Inc.
 DATE 03-08 SHEET HF103

DATE	NO.	BY	REVISIONS
	R1		