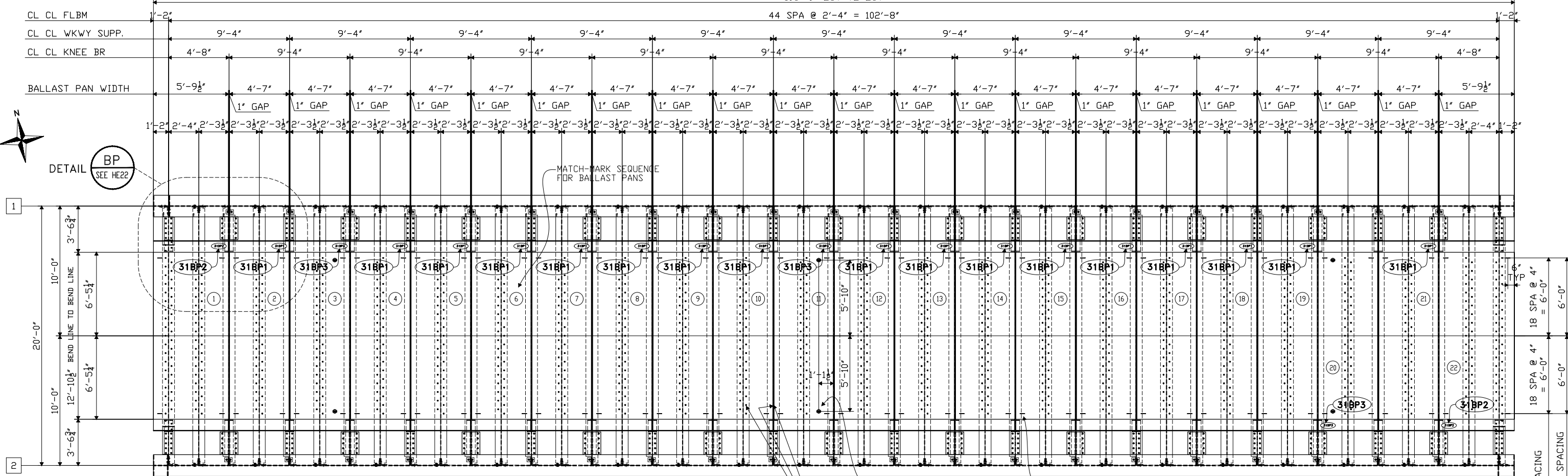


BENT #C1

BENT #B1

105'-0" OUT TO OUT

44 SPA @ 2'-4" = 102'-8"



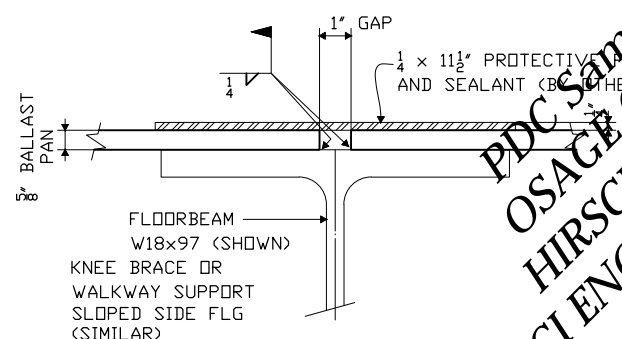
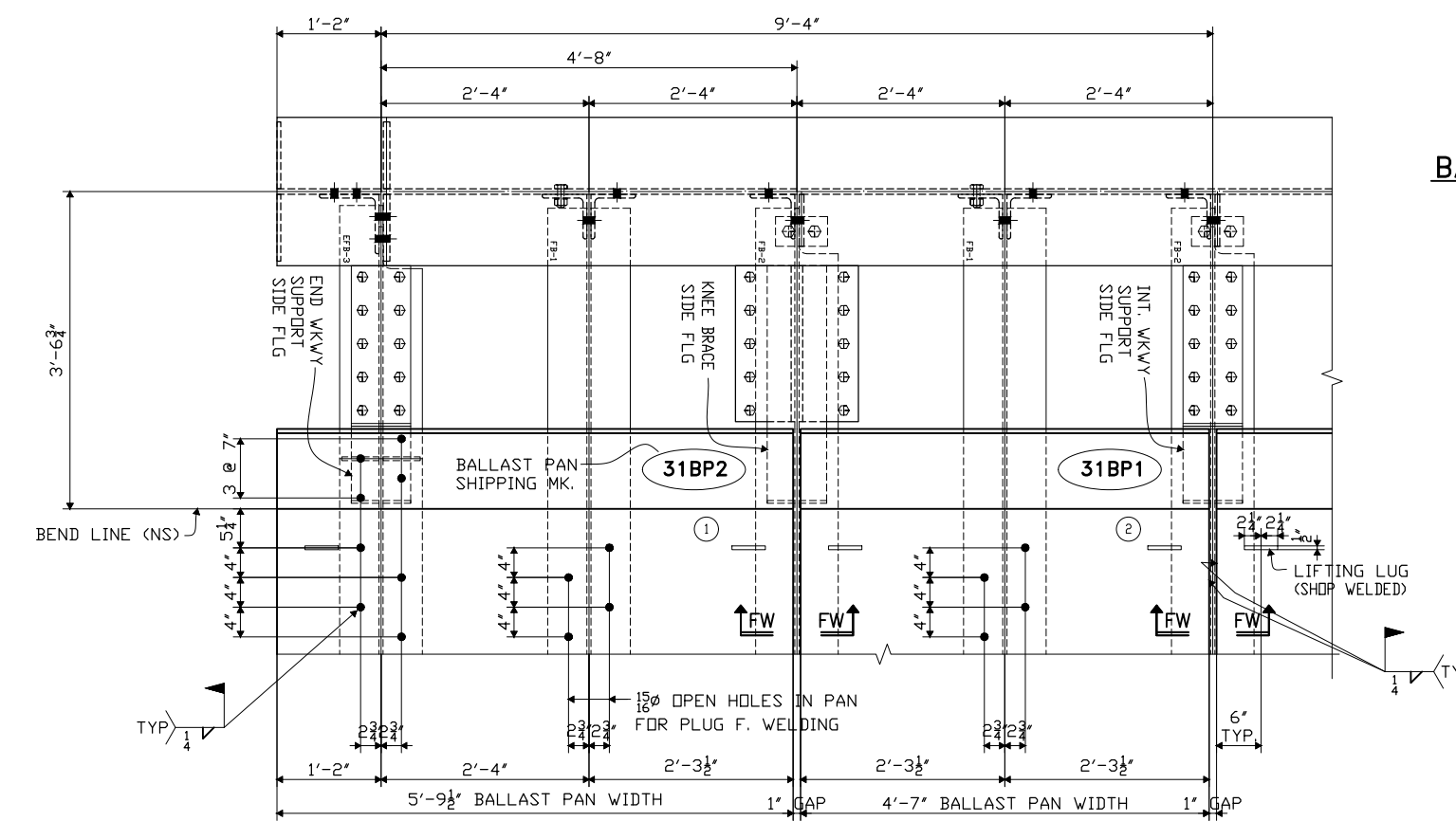
DETAIL BP SEE HE22

MATCH-MARK SEQUENCE FOR BALLAST PANS

DRAIN PIPE (SHOP WELDED)
LIFTING LUG (SHOP WELDED)

18" SPA @ 4" = 6'-0"
18" SPA @ 4" = 6'-0"
18" HOLE SPACING
LIFTING LUG SPACING

BALLAST PAN ERECTION PLAN - SPAN D
DESIGN DESIGNATION: SPAN B1



FILL GAP IN FIELD WITH CARLISLE CCW-201 POLYURETHANE SEALANT PER MANUFACTURER'S INSTRUCTIONS. COVER WITH PROTECTIVE TAPE IMMEDIATELY AFTER APPLICATION.

R.R. Ballast Pan Erection
 OSAGE CITY, MISSOURI
 HIRSCHFELD INDUSTRIES
 OCCI ENGINEERING CONTRACTORS
 UPRR 2012

UNION PACIFIC RAILROAD PROJECT No. 48151
C E NUMBER 118498

ORDER NO.	12-18758H22
DETAILS OF	BALLAST PAN ERECTION PLAN
	SPAN D
PROJECT	BR #116.89 JEFFERSON CITY SUB.
	UPRR OVER OSAGE RIVER
LOCATION	OSAGE CITY, MISSOURI
CUSTOMER	OCCI ENGINEERING CONTRACTORS
	HIRSCHFELD INDUSTRIES
	BRIDGE
	GREENSBORO, NC (336) 275-9711
MADE BY	WS
CHECKED BY	PDC/SB
SOUND LEADER	Precise Drafting Co., Inc.
DATE	03-12
	SHEET HE22

DETAIL BALLAST PAN - SPAN D SEE HE22- BALLAST PAN ERECTION PLAN