

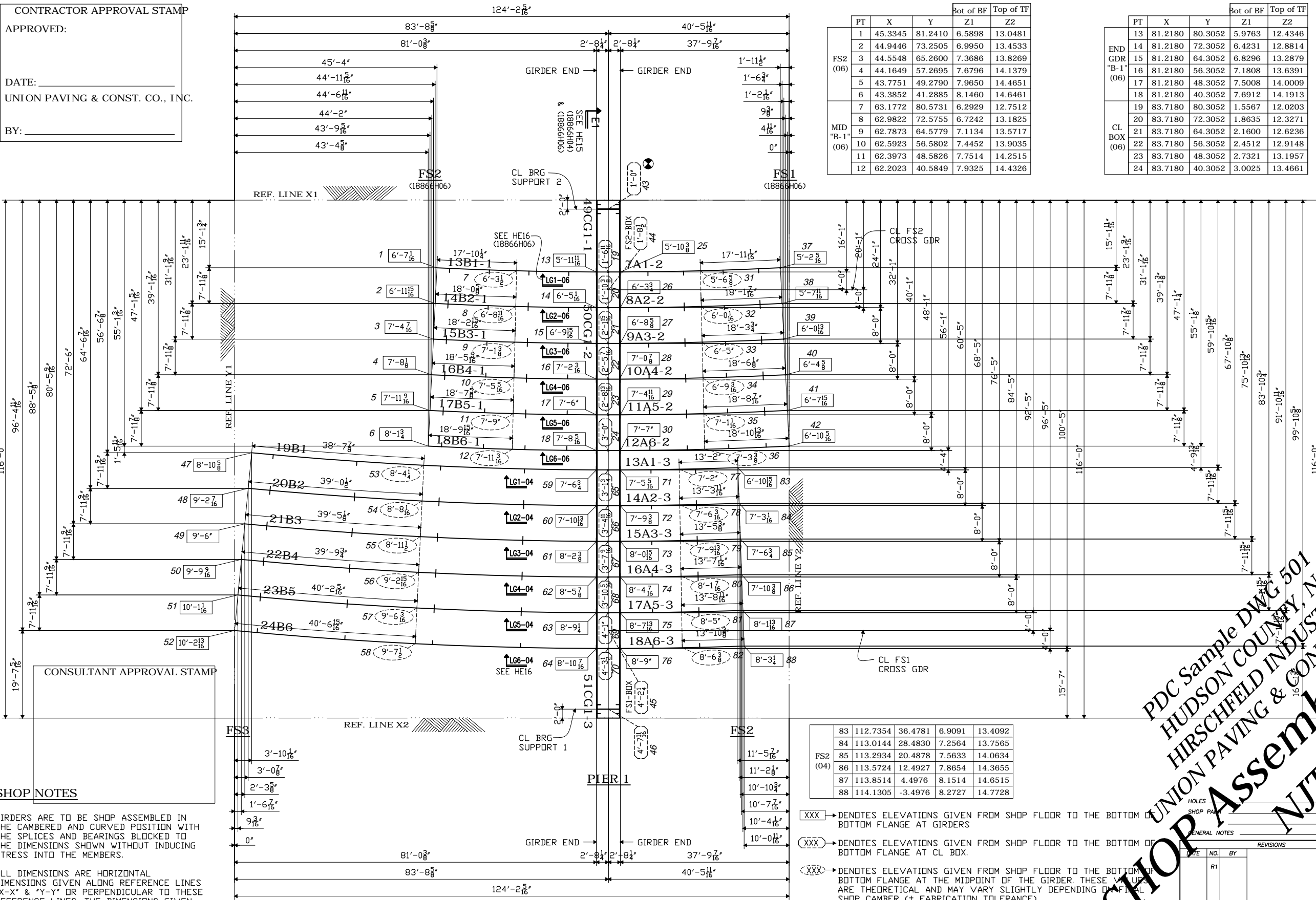
CONTRACTOR APPROVAL STAMP

APPROVED:

DATE:

UNION PAVING & CONST. CO., INC.

BY:



	PT	X	Y	Bot of BF	Top of TF
FS2 (06)	1	45.3345	81.2410	6.5898	13.0481
	2	44.9446	73.2505	6.9950	13.4533
	3	44.5548	65.2600	7.3686	13.8269
	4	44.1649	57.2695	7.7696	14.1379
	5	43.7751	49.2790	7.9650	14.4651
	6	43.3852	41.2885	8.1460	14.6461
MID "B-1" (06)	7	63.1772	80.5731	6.2929	12.7512
	8	62.9822	72.5755	6.7242	13.1825
	9	62.7873	64.5779	7.1134	13.5717
	10	62.5923	56.5802	7.4452	13.9035
	11	62.3973	48.5826	7.7514	14.2515
	12	62.2023	40.5849	7.9325	14.4326

	PT	X	Y	Bot of BF	Top of TF
END GDR "B-1" (06)	13	81.2180	80.3052	5.9763	12.4346
	14	81.2180	72.3052	6.4231	12.8814
	15	81.2180	64.3052	6.8296	13.2879
	16	81.2180	56.3052	7.1808	13.6391
	17	81.2180	48.3052	7.5008	14.0009
	18	81.2180	40.3052	7.6912	14.1913
CL BOX (06)	19	83.7180	80.3052	1.5567	12.0203
	20	83.7180	72.3052	1.8635	12.3271
	21	83.7180	64.3052	2.1600	12.6236
	22	83.7180	56.3052	2.4512	12.9148
	23	83.7180	48.3052	2.7321	13.1957
	24	83.7180	40.3052	3.0025	13.4661

	PT	X	Y	Bot of BF	Top of TF
BEG GDR "A-2" (06)	25	86.2180	80.3052	5.8663	12.3246
	26	86.2180	72.3052	6.3131	12.7714
	27	86.2180	64.3052	6.7196	13.1779
	28	86.2180	56.3052	7.0708	13.5291
	29	86.2180	48.3052	7.3908	13.8909
	30	86.2180	40.3052	7.5812	14.0813
MID "A-2" (06)	31	104.3252	80.5749	5.5522	12.0105
	32	104.5208	72.5772	6.0043	12.4626
	33	104.7165	64.5796	6.4172	12.8755
	34	104.9122	56.5820	6.7661	13.2244
	35	105.1078	48.5844	7.0885	13.5886
	36	105.3035	40.5868	7.2814	13.7815
FS1 (06)	37	122.2342	81.2475	5.1928	11.6511
	38	122.6254	73.2571	5.6397	12.0980
	39	123.0166	65.2667	6.0682	12.5265
	40	123.4078	57.2762	6.3859	12.8442
	41	123.7990	49.2858	6.6614	13.1615
	42	124.1902	41.2954	6.8595	13.3596
SUPP 2	43	83.7180	94.3889	1.0000	11.4636
FS2-BOX	44	83.7180	76.3052	1.7075	12.1711
FS1-BOX	45	83.7180	-0.0281	4.1883	14.6519
SUPP 1	46	83.7180	-17.6111	4.6400	15.1036
FS3 (04)	47	3.8403	39.8152	8.8851	15.2601
	48	3.0722	31.8522	9.2038	15.5788
	49	2.3042	23.8891	9.5026	15.8776
	50	1.5361	15.9261	9.7961	16.1711
	51	0.7681	7.9630	10.0901	16.4651
	52	0.0000	0.0000	10.2340	16.6090
MID "B" (04)	53	42.3908	36.9990	8.3538	14.7288
	54	42.0063	29.0082	8.6726	15.0476
	55	41.6219	21.0175	8.9609	15.3359
	56	41.2374	13.0267	9.2440	15.6190
	57	40.8529	5.0359	9.5171	15.8921
	58	40.4684	-2.9548	9.6246	15.9996
END GDR "B" (04)	59	81.2180	35.9719	7.5604	14.0605
	60	81.2180	27.9719	7.9004	14.4005
	61	81.2180	19.9719	8.1995	14.6996
	62	81.2180	11.9719	8.4883	14.9884
	63	81.2180	3.9719	8.7771	15.2719
	64	81.2180	-4.0281	8.9894	15.3695
CL BOX (04)	65	83.7180	35.9719	4.4320	13.6069
	66	83.7180	27.9719	4.8329	13.8565
	67	83.7180	19.9719	5.2320	14.0956
	68	83.7180	11.9719	5.6308	14.3244
	69	83.7180	3.9719	6.0283	14.5479
	70	83.7180	-4.0281	6.4223	14.7559
BEG GDR "A-3" (04)	71	86.2180	35.9719	7.4404	13.9405
	72	86.2180	27.9719	7.7804	14.2805
	73	86.2180	19.9719	8.0795	14.5796
	74	86.2180	11.9719	8.3683	14.8684
	75	86.2180	3.9719	8.6518	15.1519
	76	86.2180	-4.0281	8.7494	15.2495
MID "A-3" (04)	77	89.5724	36.1230	7.1643	13.6644
	78	99.7720	28.1242	7.5168	14.0169
	79	99.8515	20.1254	7.8185	14.3186
	80	99.9910	12.1266	8.1206	14.6207
	81	100.1305	4.1278	8.4170	14.9171
	82	100.2701	-3.8709	8.5331	15.0332

SHOP NOTES

GIRDERS ARE TO BE SHOP ASSEMBLED IN THE CAMBERED AND CURVED POSITION WITH THE SPLICES AND BEARINGS BLOCKED TO THE DIMENSIONS SHOWN WITHOUT INDUCING STRESS INTO THE MEMBERS.

ALL DIMENSIONS ARE HORIZONTAL DIMENSIONS GIVEN ALONG REFERENCE LINES "X-X" & "Y-Y" OR PERPENDICULAR TO THESE REFERENCE LINES. THE DIMENSIONS GIVEN DO NOT REFLECT ANY CHANGE DUE TO GRADE.

	PT	X	Y	Bot of BF	Top of TF
FS2 (04)	83	112.7354	36.4781	6.9091	13.4092
	84	113.0144	28.4830	7.2564	13.7565
	85	113.2934	20.4878	7.5633	14.0634
	86	113.5724	12.4927	7.8654	14.3655
	87	113.8514	4.4976	8.1514	14.6515
	88	114.1305	-3.4976	8.2727	14.7728

- (XXX) - DENOTES ELEVATIONS GIVEN FROM SHOP FLOOR TO THE BOTTOM OF BOTTOM FLANGE AT GIRDERS
- (XXX) - DENOTES ELEVATIONS GIVEN FROM SHOP FLOOR TO THE BOTTOM OF BOTTOM FLANGE AT CL BOX.
- (XXX) - DENOTES ELEVATIONS GIVEN FROM SHOP FLOOR TO THE BOTTOM OF BOTTOM FLANGE AT THE MIDPOINT OF THE GIRDER. THESE VALUES ARE THEORETICAL AND MAY VARY SLIGHTLY DEPENDING ON GIRDER SHOP CAMBER (± FABRICATION TOLERANCE).
- ⊙ - DENOTES THE LOWEST ELEVATION POINT (1'-0) FOR THE ENTIRE ASSEMBLY.

STOP Assembly Diagram

PDC Sample DWG 501
HUDSON COUNTY, NJ
HIRSCHFELD INDUSTRIES
UNION PAVING & CONST. CO. INC.
NJTA 2015

NEW JERSEY TURNPIKE AUTHORITY
CONTRACT No. T300.311
INTERCHANGE 14A TOLL PLAZA & RAMPS

ORDER NO. 14-18866H04
DETAILS OF SHOP ASSEMBLY DIAGRAM

PROJECT STRUCTURE No. N3.53FR
CONN. RD "TE" Spans 4W-1W (UNIT 1)

LOCATION HUDSON COUNTY, NJ
CUSTOMER UNION PAVING & CONSTRUCTION CO., INC.

HIRSCHFELD INDUSTRIES
BRIDGE
GREENSBORO, NC (336) 275-9711

MADE BY CM
CHECKED BY PDC/SB
SOUND LEADER Precise Drafting Co., Inc.
DATE 01-15

SHEET HE17

SHOP ASSEMBLY DIAGRAM