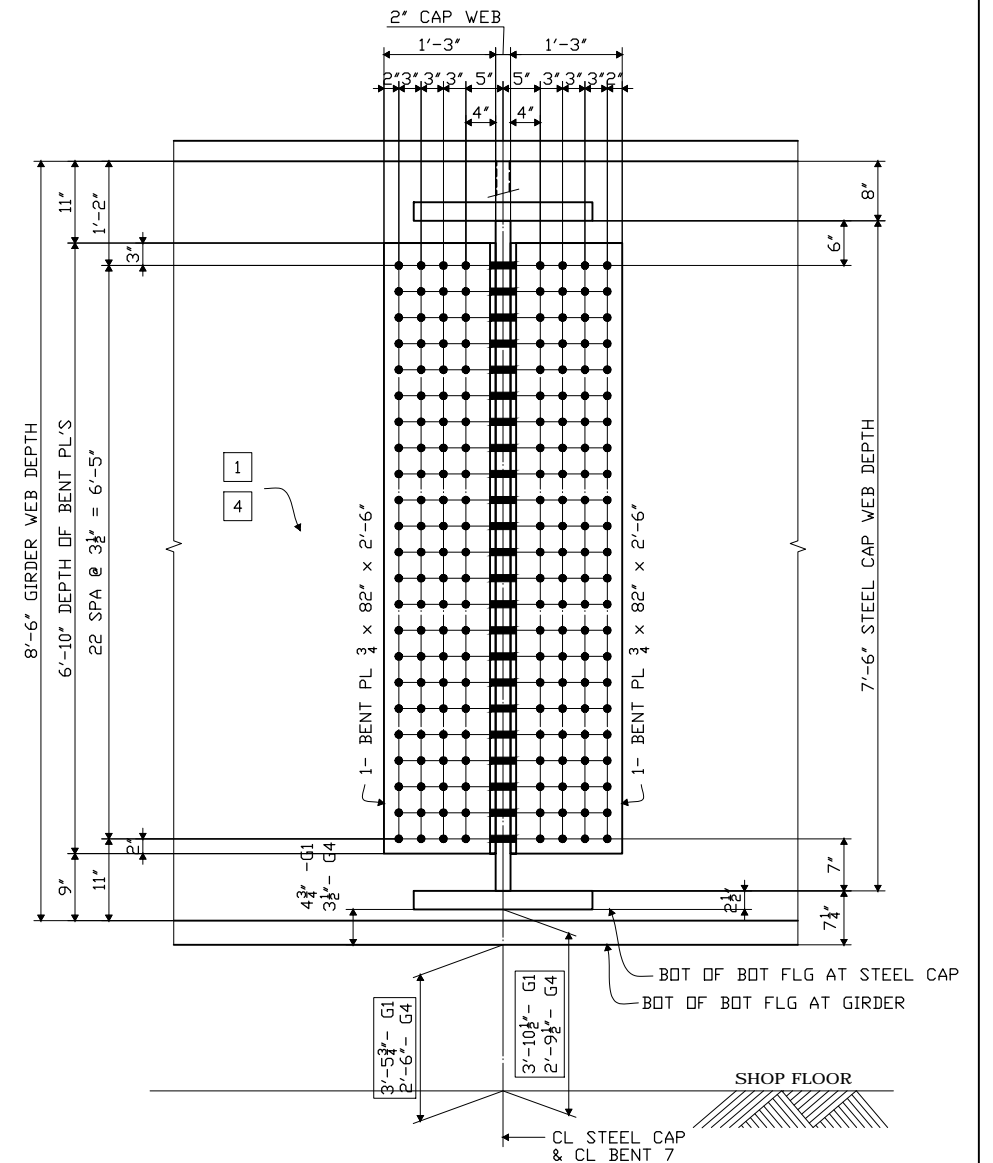


SHOP ASSEMBLY DIAGRAM  
STEEL CAP CROSS GIRDER AT BENT 7



SECTION G1L (SHOWN)  
SECTION G4L (SIMILAR)

SHOP NOTES

GIRDERS ARE TO BE SHOP ASSEMBLED IN THE CAMBERED AND CURVED POSITION WITH THE SPLICES AND BEARINGS BLOCKED TO THE DIMENSIONS SHOWN WITHOUT INDUCING STRESS INTO THE MEMBERS.

ALL DIMENSIONS ARE HORIZONTAL DIMENSIONS GIVEN ALONG REFERENCE LINES 'X-X' & 'Y-Y' OR PERPENDICULAR TO THESE REF. LINES. THE DIMENSIONS GIVEN DO NOT REFLECT ANY CHANGE DUE TO GRADE.

ELEVATIONS SHOWN THUS [1'-0"] ARE FROM SHOP FLOOR TO THE BOTTOM OF BOTTOM FLANGE.

ELEVATIONS SHOWN THUS (XXX) ARE FROM SHOP FLOOR TO THE BOT OF BDF FLG AT CL STEEL CAP CROSS GIRDER.

ELEVATIONS SHOWN THUS (XXX) ARE FROM SHOP FLOOR TO THE BOT OF BOT FLANGE AND ARE GIVEN TO THE MIDPOINT OF EACH GIRDER. THESE VALUES ARE THEORETICAL AND MAY VARY SLIGHTLY DEPENDING ON FINAL SHOP CAMBER (+/- FABRICATION TOLERANCE).

⊙ DENOTES LOWEST ELEVATION POINT (<1'-0") FOR THE ENTIRE ASSEMBLY.

PT #	X	Y	Z1	Z2
1	0	0	2.7006	11.4922
2	-0.3198	7.4932	2.9883	11.9467
3	-0.6395	14.9864	3.3827	12.3411
4	-0.9593	22.4795	<b>3.6986</b>	<b>12.6986</b>
5	42.7940	0.9127	<b>2.7870</b>	<b>10.7036</b>
6	42.7940	8.4126	<b>1.0000</b>	<b>11.0676</b>
7	42.7940	15.9127	<b>1.0000</b>	<b>11.4326</b>
8	42.7940	23.4127	<b>3.8810</b>	<b>11.7976</b>
9	42.7940	0.9127	<b>2.4953</b>	<b>11.3287</b>
10	42.6690	8.4126	<b>2.7552</b>	<b>11.7552</b>
11	42.6690	15.9127	<b>3.1202</b>	<b>12.1202</b>
12	42.7940	23.4127	<b>3.4852</b>	<b>12.4852</b>
13	42.9190	8.4126	<b>2.7552</b>	<b>11.7552</b>
14	42.9190	15.9127	<b>3.1202</b>	<b>12.1202</b>
15	85.5880	0	2.2778	11.0694
16	85.9078	7.4932	2.5697	11.5281
17	86.2275	14.9864	2.9228	11.8812
18	86.5473	22.4795	<b>3.2756</b>	<b>12.2756</b>
19	21.1697	8.1814	3.0196	11.9780
20	21.0098	15.6797	3.3792	12.3792
21	64.4183	8.1814	2.2841	11.2425
22	64.5782	15.6797	2.6395	11.6395

BOTTOM OF BOT FLG.  
TOP OF TOP FLG.

PDC Sample DWG 510  
MONTGOMERY COUNTY, TX  
HIRSCHFELD INDUSTRIES  
WILLIAM BROTHERS CONST.  
**SHOP Assembly Diagram**  
TXDOT 2013

FABRICATED BY MONTGOMERY  
HOLES SHOP FASTENERS  
SHOP PAINT  
SHOP INSPECTION  
GENERAL NOTES

DATE	NO.	BY	REVISIONS
	R1		

FED. ROAD DIV. NO.	STATE	FED AID PROJECT No.
6	TEXAS	PTF 1102 (319)
STATE DIST. NO.	COUNTY	CONTROL NUMBER
HOU	MONTGOMERY	3538
		01
		030
		SH 242

ORDER NO. 12-1321H03  
DETAILS OF SHOP ASSEMBLY DIAGRAM  
STEEL CAP AT BENT 7  
PROJECT SH 242 AT IH 45 DIRECT CONNECTORS  
WB-SB DC (1023.00' SPG- UNIT 3)  
LOCATION MONTGOMERY COUNTY, TEXAS  
CUSTOMER WILLIAMS BROTHERS CONSTRUCTION CO.  
**HIRSCHFELD INDUSTRIES**  
BRIDGE  
GREENSBORO, NC (336) 275-9711  
MADE BY VS  
CHECKED BY PDC/SB  
SOUND LEADER Precise Drafting  
DATE 02-2013  
SHEET HE213